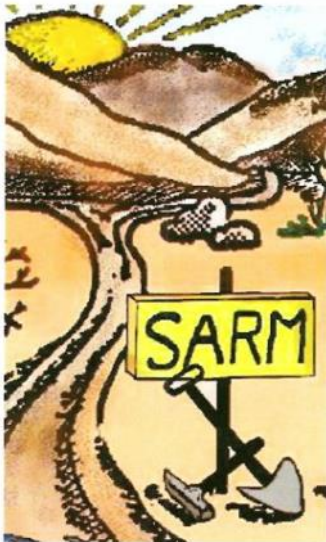




P.O Box 51
Santa Ana, CA 92702



JUN-JULY 2018



CHIPS 'N' SPLINTERS

**Santa Ana Rock and Mineral Club
Jun-July Issue Newsletter**



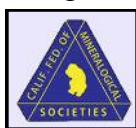
INFORMATION

www.sarmclub.org

sarmclub@gmail.com

P.O. Box 51
Santa Ana, CA 92702

The purpose of the Club is to offer an opportunity for those who are interested in rocks, minerals, fossils and gems, to gather at regular meetings, display and examine items of interest in the hobby, to promote and also encourage the art and practice of lapidary, to exchange experiences and ideas, to organize field trips for members and guests, and to promote the general interest in and knowledge of the hobby.



Santa Ana Rock and Mineral Club is a member of the California Federation of Mineralogical Societies (CFMS). For more information on shows and events check out their website www.cfmsinc.org

MEETINGS: 7:00pm every 3rd Wednesday of the Month (except July & Dec)
VISITORS ARE WELCOME!

WHERE: Clubhouse, 10739 Los Jardines West, Fountain Valley, CA 92708

CLUB CALENDAR 2018

Jun 2nd & 3rd: Work Shop

Jun 20th: General Meeting
Wire Wrapping Class
Pam Greene Dania Boucher

Aug 4th & 5th: Work Shop

Aug 15th: General Meeting
Guest Speaker

BOARD OF DIRECTORS

PRESIDENT Jim DeMarco

VICE PRESIDENT Dania Boucher

SECRETARY Leah Harden-O'Brien

TREASURER Charlotte Spalding

PARLIAMENTARIAN Trish Voss

FEDERATION Nancy Bird
Honorary Member

COMMITTEE OFFICERS

WORKSHOP Pam & Don Greene

EDITOR/NEWSLETTER
sarmclub@gmail.com

FIELD TRIP Ray Walls

WEBMASTER/NEWSLETTER Ning Su

HOSPITALITY Josie Nellis

MEMBERSHIP Jim DeMarco

DONATIONS

Accepting donations for club's monthly opportunity drawings and door prize. Donations of rock & gem slabs (**slabs only**) or a grinder to long beach VA hospital's lapidary shop are greatly appreciated!



THE PRESIDENTS MESSAGE

The main program for our June rock club meeting will be a wire wrapping workshop. Instead of speakers there will be instructors teaching you how to make your own project. Most of the materials will be provided however if you have a favorite stone you would like to use, bring it to the workshop.

We also plan to try something new this month. Over the years the club has been donated a lot of rocks. Some of them are quite nice however a number of them can only be called "yard rocks". Besides our regular opportunity drawing table we will also have a table of "FREE" rocks for anyone to take. This means that we will have to have a selection of better specimens to entice our members to buy chances for the opportunity drawing. Donations of really good rock and mineral prizes will be much appreciated for the June meeting. Please, look through your collections for duplicates and other items you think would be appreciated by others.

I would like to thank those who were able to help with the Club's Publicity booth at the Green Valley Memorial Day Picnic. We were able to talk to a great number of people, give them a club brochure, provide them with a couple of rock games and have a "Guess the number of tumbled stones" in the jar. The club also donated several prizes to Green Valley to be used during their Bingo games after the picnic.

See you on June 20th.

President, Jim De Marco

WORK SHOP

Members only

\$ 3.00 fee

**AT THE GREENE'S HOME
1ST FULL WEEKEND OF
THE MONTH**

9:00 AM TO NOON

CALL

949-548-0752

TO REQUEST

FLEXIBLE TIMES



BIRTHDAYS!



JUNE

- Leah Harden-O'Brien
- Richard Conlan
- Jill Carder
- Paul Berg
- John Robert Gehrke
- Bill O'Dell
- June Huntley
- Julia Davidson



JULY

- Donald Green
- Elaine Foster
- Michael Anglin
- Blake Barr
- Craig Curry
- Martha Jensen
- Darrel Rodgers
- Jeff Robson



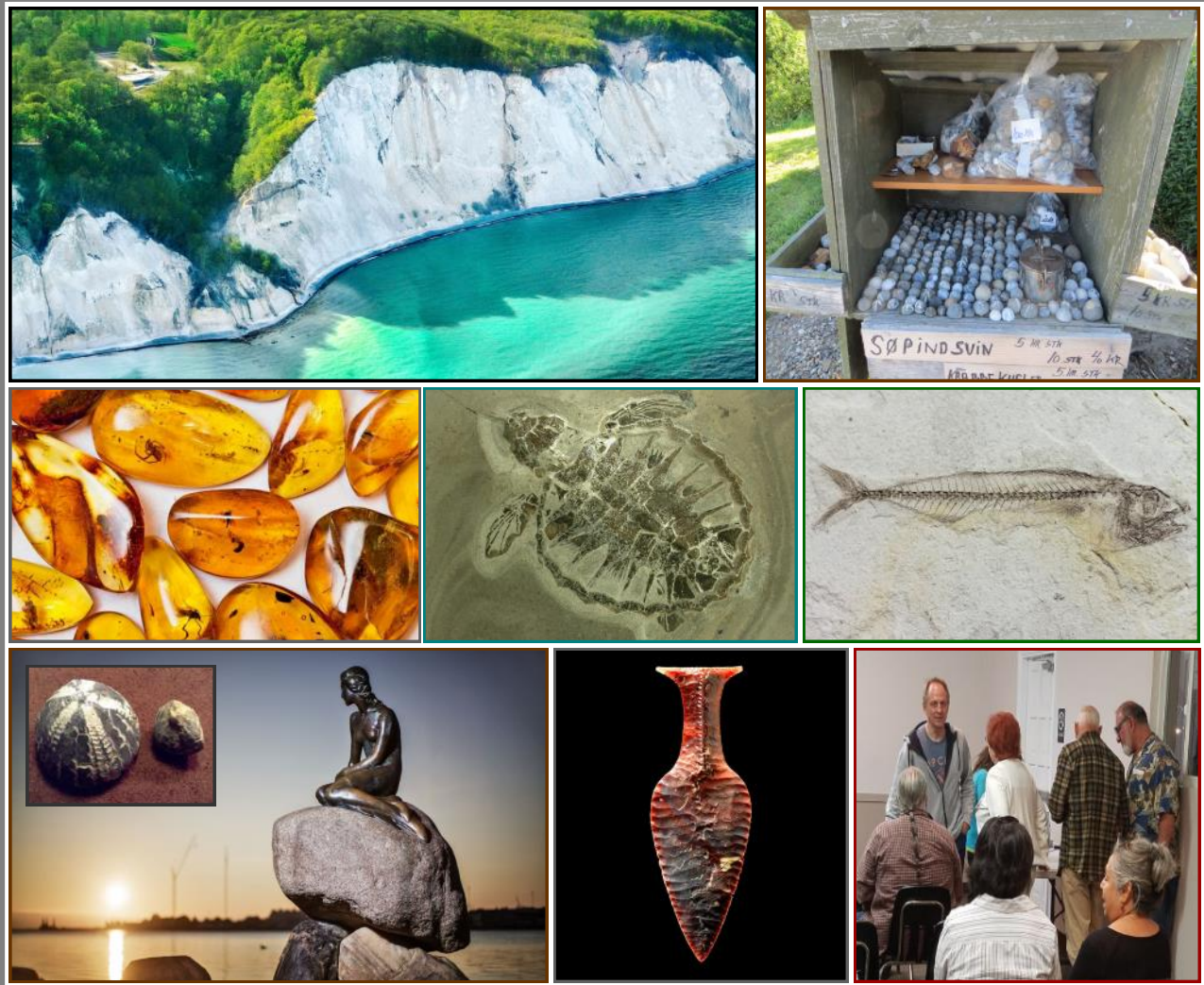


GREEN VALLEY MEMORIAL DAY PICNIC *May 28th, 2018*

The Green Valley Memorial Day Picnic was held on Monday 28th, from 10am to 3pm. The set up was on the green belt behind the building where we hold our regular Club meetings. There were lots of visitors there throughout the day. Many booths offer games, snacks, music, food and drinks. SARM club's booth offers several games which were popular among kids, and kids learned about rocks. Both adults and kids enjoyed water balloon tossing game, and many winners took their prizes. Sidewalk chalk contest also drew attention due to many talented artists.



“Our nation owes a debt to its fallen heroes that we can never fully repay, but we can honor their sacrifice.”
 ~ President Barack Obama



Sometimes, we may dig up artifacts, arrowheads, dinosaur skeleton, or animal fossils which tell us stories of their own time in history. Fossils of marine life such as petrified sea urchin, shark teeth, whale bones or ambers may also be found in nature if we look a bit more carefully. When a person walks and looks down at the same time, it is likely that you just run into a rockhound. Rocks and minerals are everywhere. Had you noticed what little mermaid is sitting on?

MEMBERS INPUT

Submit an article or pictures of your experiences in the field trip rock hunting, collecting, handling, uses or in the cutting and/or polishing of roughs that may benefit our readers. Please email sarmclub@gmail.com for consideration. Thank You!

BLM Approves Two Exploratory Projects in the CA Desert
May 16, 2018

Two projects has been approved by BLM recently. The Perdito Exploration Project and the Green Planet Group sampling project both support and encourage environmentally responsible development of minerals on public lands, while creating jobs and economic incentives.

The Perdito Project is located on existing un-patented lode mining claims in Inyo County on public lands. The Green Planet Group has been authorized to excavate and take placer gold samples from a half-acre of public land at the St. Philips placer claim, located south of El Paso Mountains Wilderness in Kern County. This project includes excavation and processing about 600 tons of placer material at a depth of no more than five feet deep.

Split Apple Rock, New Zealand

Split Apple Rock was first named in 1988. It is made of granite and is in the shape of an apple cut in half. It is situated in shallow water just off of Kaiteriteri Beach in Abel Tasman National Park, South Island, New Zealand. This split rock remains a popular tourist attraction in the area. Suggested by geologists, it is formed during an ice age when ice in the cracks expanding in volume and thus splitting the rock.



Insanity is doing the same thing, over and over again, but expecting different results. ~ AE

Short cuts make long delays.

~ J.R.R. Tolkien

The Gemstone Pearl and Alexandrite

For those who are born in June, pearl and alexandrite are your birthstones. Pearl is an organic product of nature coming from the bodies of the pearl oysters and pearl mussels. They can form natural or be cultured by seeding tiny particles inside oyster shells. Pearls exhibit dull to sub-metallic luster, and they may be dyed. They can be fractured uneven to show step like break. They are gritty to cutting edges of teeth as oppose to smoothness from most imitations. To separate natural pearls from cultured pearls, radiography and fluorescence are definitive tests to use. The Oriental Pearl is known as the "gem of the moon" and is believed to confer the great gift of vitality to the wearer.



Alexandrite is one of the rarest colored gemstones. It is the gem variety of chrysoberyl. The chrysoberyl crystals are prismatic and twinned. The color varies from green to brownish or gray. Chrysoberyl forms in many rocks and also occurs



Incandescent mixed light daylight

in placer sands. It is an insoluble mineral and has a hardness of 8 1/2. The gem variety of chrysoberyl is alexandrite, and it displays various shades of green in daylight but is red under tungsten lights. Typically, alexandrite shows a very distinctive color change, from emerald green color in daylight to raspberry red under incandescent light. Extremely rare specimens of alexandrite can exhibit chatoyancy effect. Chatoyancy (cat's eye) produces a thin band of light through a mineral. The color change of alexandrite is due to absorption of yellow and blue lights of the color spectrum. One shows the distinct change of color is uncommon to find and often costly. This gemstone was discovered in the Ural region of Russia when the Russian tsar, Alexander II came of age. The most important stones were owned by the Russian Royal Family. This red and green color change stone became the gemstone of Imperial Russia's Tsardom.



The Gemstone Ruby

For those who are born in July, ruby is your birthstone. Ruby is a red variety of corundum which is aluminum oxide. It is the second-hardest mineral. It has a hardness scale of 9 that surpasses all other minerals except diamond. Corundum is a six-sided crystal and has a nonmetallic luster. Due to its hardness, it can also be utilized as an abrasive. Ruby is valued as a gemstone because of its beauty and color. It shows good cleavage and usually is faceted for jewelry making. Although corundum can be found in different countries, Burma is home to many astonish and remarkable ruby gemstones. Ruby contains criss-cross needles of rutile that generate a star shape when light shines on them. This is known as asterism. Other minerals like sapphire, a blue variety of corundum also possess this optical property. When rubies, sapphire and gold are found by panning in river sand, it often show more of these mineral deposits in the river upstream.



WORK SHOP BITS & TIPS

The workshop is open to all members the first full weekend of the month. Pam & Don Greene our Workshop Officers are flexible. Call (949) 548-0752 for alternate times if needed.

The Workshop is fully equipped with tools to make cabochons from start to finish, as well as a small kiln for dichotic glass work and also jigs for wire working. In addition, rough stones and materials are available for members to practice on.

TUMBLING MADE EASY ★ ★ ★ ★ ★

Mohs Scale of Hardness



- | | |
|---------------|------------------|
| 1. Talc | 9. Corundum |
| 2. Gypsum | 10. Diamond |
| 3. Calcite | Fingernail (2.5) |
| 4. Fluorite | |
| 5. Apatite | Knife (5.5) |
| 6. Orthoclase | Glass (5.5) |
| 7. Quartz | Steel Nail (6.5) |
| 8. Topaz | |



Tumblers can be used to polish rough stones and rocks of various shapes, cabochons or slabs up to 4 inches in diameter. They require 4 to 6 weeks running continuously to yield 6 to 12 pounds.

GRINDING

Clean barrel and lid before tumbling and in between each use to avoid contamination. To insure a tight seal on tumbler lids, remove all grit and stone chips from the rubber seal. Separate rough stones according to their hardness and select different shapes and sizes to fill the tumbling barrel to just under 3/4 full. Add water to the barrel to just below the level of the stones. If stones are rough and have crust on them, start tumbling at 60/90 grits. If they are smooth, it's okay to start tumbling at 220 grits. Add 2 Tbsp grits for a small barrel (4 Tbsp for a large barrel). Let the tumbler run continuously for 4 to 5 weeks. Examine stones for progress every week, check for water level and release the pressure inside the barrel. When first started, they may need to be "burped" daily to prevent gas buildup. If the mixture inside the barrel turned into thick mud, clean the barrel and add 220 grit. Otherwise, close the barrel and continue tumbling.



POLISHING

Clean the barrel and the stones thoroughly. At the end of 4 to 5 weeks, the 3/4 full barrel may reduce to 1/2 barrel stones or less. Fill the barrel with water to just below the level of the stones. Add polishing powder and tumbling media such as plastic or ceramic pellets which can be used for cushioning, filler, size balancing and to yield brighter tumbled stones with fewer defects. Continue to run the tumbler for 1 to 3 weeks to a desired polish. At the end of polishing, do a water rinse with pellets in the barrel for few hours to remove residual polishing powder and to get the rocks extra clean.

UPCOMING SHOWS & EVENTS

JUN JULY 2018 Field Trips

Saturday, June 16th Jackhammer Pass area (just North of Barstow)

Mining Supplies and Rock Shop: 760.244.9642 www.miningsuppliesandrockshop.com

This area has a lot of small locations that are not far from each other. We will be looking for jasper, agate nodules, seam agate, minerals and onyx. All the roads should be OK for any high clearance vehicles. Vehicles that are 2 wheel drive, however may have to park a little further from the collecting areas.

Sunday, July 22nd Mule Canyon Mining Supplies and Rock Shop

760.244.9642 www.miningsuppliesandrockshop.com

We will hit three or four sites in the Mule Canyon area. We will be looking for petrified palm wood, agates, and jaspers. The roads should be open to all high clearance vehicles.



JUN JULY 2018 Show

June 8-10: La Habra, CA

North Orange County Gem & Mineral;
LaHabra Community Center
101 West La Habra Blvd
Fri. 5-8, Sat. 10-5, Sun. 10-5
Contact: Armando Pderdoza, (909) 455-6800
Email: forestandsun@yahoo.com
Website: www.nocgms.com

June 9-10: Escondido, CA

Palomar Gem and Mineral Club; Escondido,
CA, 340N. Escondido Blvd.
Sat. 10-5, Sun. 10-4; Adults \$5, Seniors/
Students \$3; contact Dawn Vickers;
Email: pgmshow@palomargem.org
Web site: www.palomargem.org

June 9-10: Glendora, CA

Glendora Gems
Goddard Middle School
859 E. Sierra Madre Avenue
Hours: Sat. 10-5; Sun 10-4
Contact: Bonnie Bidwell, (626) 963-4638
Email: ybidwell2@aol.com

June 23-24: Culver City, CA

Culver City Rock & Mineral Club
Veterans Memorial Auditorium
4117 Overland Blvd
Hours: Sat 10-6; Sun 10-5
Contact: Janice Metz, (310) 850-4398
Email: janicemtz@yahoo.com
Website: www.culvercityrocks.org

July 13-15: San Rafael, CA

Wholesale and retail show; Gem Faire Inc.
Marin Center, 10 Avenue of the Flags; Fri. 12-6,
Sat. 10-6, Sun. 10-5; free admission; fine jewelry,
crystals, gems, beads, gold and silver, minerals
and more at manufacturer prices, exhibitors from
all over the world, jewelry repair and ring sizing
while you shop, free hourly door prizes; contact
Yooy Nelson (503) 252-8300;
Email: info@gemfaire.com
Web site: www.gemfaire.com



July 20-22: Eureka, CA

Wholesale and retail show; Gem Faire Inc.;
Redwood Acres Fairgrounds, 3750 Harris St.;
Fri. 12-6, Sat. 10-6, Sun. 10-5; adults, seniors and
students \$5, children (ages 0-11) free; fine jewel-
ry, crystals, gems, beads, gold and silver, minerals
and more at manufacturer prices, exhibitors from
all over the world, jewelry repair and ring sizing
while you shop, free hourly door prizes; contact
Yooy Nelson (503) 252-8300
Email: info@gemfaire.com